



## **MPSKR /SUMMER HOLIDAY HOMEWORK /CLASS 7/2024-25**



### **General Instructions**

- All the assignments should be done as specified .
- Revise(orally)and learn all the work done till now.
- The students need to complete the given assignments and keep them safe as once the school will reopen, these assignments will be graded and evaluated as HW and Multiple Assessment..
- Enhance your communication skill by conversing with your friends, parents and siblings in English. Keep yourself abreast with the latest happenings by reading English newspaper regularly.



### **General instructions –**

- Assignments should be made according to the roll numbers and should be creative, eye catching, neat and clean as well.
- Best Models or Assignments will be displayed accordingly.

### **Holiday Homework –**

#### **A. Make a working model on the following topics-**

- Verb (Roll No. 1-10)
- Determiners (Roll No. 11-20)
- Noun (Roll No. 21-25)
- Adjectives (Roll No. 26-34)
- Articles( Roll No. 35-40)
- Tenses (Roll No. 41 onwards)

#### **Art Integration project ( Rajasthan and Nagaland)**

• **Make a file from colourful sheets on Poets of Rajasthan and Poets of Nagaland.**  
( Roll no. 1- 10)

• **Newspaper Making** (Roll no. 11- 20)

(Students should include , dances, sports, current events of Rajasthan and Nagaland in newspaper.)

• **Book review** – (Roll no .21-30) Notable novels of writers of Rajasthan and Nagaland.(For e.g. . **‘Baatan Ri Phulwari’** of Rajasthani Writer and **‘A Naga Village remembered’** by Nagaland’s writer) In book reviews students need to add the title, genre , theme , summary and ratings out of 5 stars to that particular novel.

•**Story writing in files**( Roll no. 31-37)

English translation of Rajasthan based story and English translation of Nagaland based stories; students should add folk paintings in files also to make their work more presentable.

**Magazine making**( Roll number 38 onwards)

Best tourist places of **Rajasthan** and **Nagaland** with pictures and description. (Each student should at least add five tourist places of both states)

3. Practice Notice Writing .( For every student)



\* मोबाइल फ़ोन से होने वाले लाभ और हानि के संबंध में बताते हुए मित्र को पत्र लिखिए ।

\* भाषा ,बोली , लिपि व व्याकरण पाठ याद करें, पाठ-२ वर्ण याद करें तथा वर्ण विच्छेद का अभ्यास करें।

\* पाठ १ ‘हिमालय हैं हम’ ( कविता )तथा पाठ-२ ‘भाग्य अपना-अपना’ के प्रश्न उत्तर लिखने का अभ्यास करें।

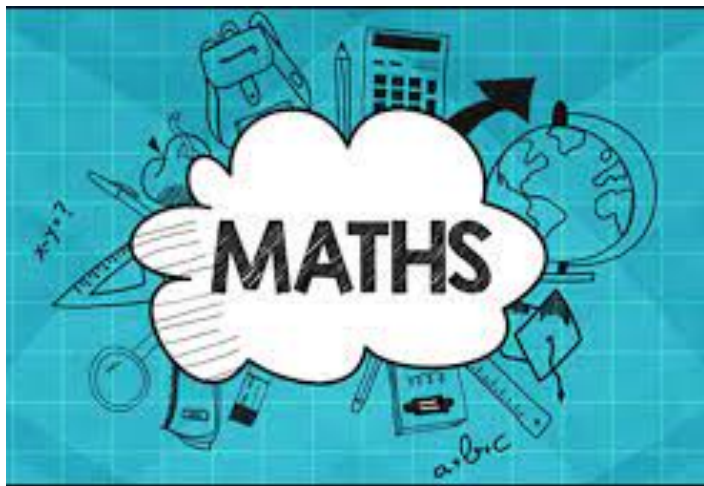
कला एकीकृत परियोजना

\* नागालैंड की भौगोलिक स्थिति से संबंधित चित्र एकत्र कर फ़ाइल में लगाइए ।

\* नागालैंड की भौगोलिक स्थिति का वर्णन करें ।

\* पाठ -1 ‘ हिमालय हैं हम ’ राजस्थान व नागालैंड के भौगोलिक स्थिति का तुलनात्मक वर्णन लिखिए व फ़ाइल में लगाएँ ।

\* परियोजना कार्य को विषयपरक व कलात्मक व प्रभावशाली बनाएँ।



### **Worksheet (To be done in revision notebook )**

Q.1 Arrange 7, -5, 40 and -4 in ascending order and mark them on a number line to check your answer.

Q 2. Write a pair of integers whose difference is -5.

Q 3. Write a negative integer and a positive integer whose sum is -8.

Q 4. Find the sum of integers 58, - 236, -58, -64, -200.

Q 5. In a class test containing 10 questions, 5 marks are awarded for every correct answer and 2 marks are deducted for every incorrect answer and zero marks for not attempted.

(I) Rohit gets four correct and six incorrect answers. What is his score?

(ii) Seema gets 5 correct and 5 incorrect answers. what is her score?

Q.6 Evaluate the following a)  $(- 36) \div (-9)$       b)  $112 \div (-8)$ .

Q.7 Simplify:  $17 - \{8 \div (2 \times 3 - 4)\}$

Q.8 In a competitive exam, 3 marks are given for every correct answer and 1 mark is deducted for every incorrect answer. Raju copied some answers from Reema and answered all the questions. He scored 20 marks though he got 10 correct answers. How many incorrect answers had he attempted? What values are promoted in the question.

Q.10 What fraction of an hour is 35 minutes?

Q.11 convert the following fraction into equivalent like fractions;

(i)  $\frac{3}{4}, \frac{5}{8}, \frac{7}{6}$

(ii)  $\frac{7}{25}, \frac{9}{40}, \frac{19}{10}$

Q.12 Kiran purchased  $\frac{6}{2}$  kg apples and  $\frac{19}{4}$  kg Oranges. What is the total weight of the fruits purchased by her?

Q.13 Renu spends  $\frac{3}{7}$  of her pocket money on purchasing new math book and is left with Rs 220. Find the cost of math book.

Q.14 ADD 5.785, 15.34, 87.4563, 0.903

Q.15 Seema had one sandwich for her lunch and her two other friends in the class forgot to bring their lunch. Seema decided to share equally her sandwich with her friends . How much part of the sandwich each girl will get? What have you learnt by this behaviour of Seema.

### **LAB MANUAL ACTIVITY**

**Activity 1** To determine the products of decimal numbers on a square paper by drawing horizontal /vertical lines and shading.

(i)  $0.3 \times 0.7$

(ii)  $0.5 \times 0.5$

**Activity 2** TO compare the marks obtained in all the subjects by a student in the first and second term examination by drawing a bar graph using paper cutting and pasting.

**Activity 3** To verify whether a given pair of angles are supplementary.

### ART INTEGRATED ACTIVITY

Compare the literacy rate of Rajasthan and Nagaland using double bar graph. (Note: To be Done on A4 sheet)

#### Best out of waste

Draw Nagaland art on any waste material like paper, cloth, bottle etc.



#### Q1. Define the following terms

Photosynthesis, chloroplast, Chlorophyll, Symbiosis, Host, Nutrition

#### Q2. Differentiate between the following. (2 points)

- a) Autotrophs and Heterotrophs
- b) Parasites and partial parasites
- c) Decomposers and saprophytes
- d) Manure and fertilisers

#### Q3. Give reasons

- e) Lichens are composite organisms
- f) Farmers add manure after harvesting
- g) Mistletoe is a partial parasite

Q4 How do insectivorous plants derive their nutrition?

Q5. Rhizobium bacteria provide nitrogen to the plants. Explain

Q6. Decomposers play an important role in replenishing the nutrients back to soil. Explain?

Q7. Pitcher plant is green in colour but is an insectivorous plant. Why?

- Q8 . Explain any two methods to replenish the nutrients back to the soil.  
 Q9. Write a short note on different raw material used for photosynthesis.  
 Q10. Why do we perform iodine test on leaves?  
 Q11. Draw a well labelled diagram of stomata cells. How does it help in exchange of gases in leaves?

**Q12. Complete the following terms**

- h) Process of absorbing the digested food.  
 i) Glucose is stored in the form of  
 j) Special cells which contain chlorophyll  
 k) Stomata are surrounded by  
 l) I am capable of fixing nitrogen in the soil  
 m) I take mineral and water from host plant  
 n) A parasitic plant  
 o) Pitcher plant grow in soil which has less amount of  
 p) — — — provide shelter to Rhizobium bacteria  
 q) Lichens have one — — — partner and — — — partner.  
 r) Green brown patches on a moist bread are — — —  
 s) A mutually beneficial relationship is called — — — — —  
 t) Starch is stored in — — — , — — — — — , — — — — — .  
 u) A cell is bounded by a — — — — — — — .

**Note: Solve the worksheet in pin pages/ ruled pages**

**Q2** Paste picture of Dr A.P.J Abdul Kalam

Write about his contribution in the field of science and technology.

**Note: Do on A4 sheet**

**Q3. Art and subject Integrated Project**

Comparative study of Rajasthan and Nagaland

1. Paste picture of any two famous monuments . Write few lines on it.
- 2.. Draw or paste picture of any one percussion musical instrument of each state. Write five lines about it.
- 3.. Make a model of the headgear worn in Rajasthan ( Turban / Pagri) and headgear worn in Nagaland(Akutsukukha) using paper, ice cream sticks etc and paste on A4 sheet neatly.
- 4.. Paste picture of the migratory birds that come to Rajasthan and Nagaland. Write about them.

Q4. Prepare a working model on any one of the following

1. Carnival ride
2. Escalator
3. Mini Flour mill
4. Wind power generator
5. Green house working model
6. A Robot
7. Elevator
8. Space shuttle launching working model
9. Hydroponic farming model
10. Integrated farming system



1. Prepare a model on any one topic from the following options ,which are given below:

- (a) showing components of natural environment - Biotic & Abiotic
- (b) Showing a model of volcanic eruption.
- (c) Interior structure of the Earth.
- (d) Model of Earthquake.
- (e) Model on any monument of Delhi Sultanate time period.
- (f) Historical sources of Medieval India : (archaeological & literary sources )
- (g) Model of state legislative Assembly.
- (h) 3D chart of Preamble of the Constitution.
- (i) Working model of globe.
- (j) 3D model of structure of atmosphere.

2. Create a timeline of some of the important events of your life starting from your birth in a scrapbook.

3. Art Integrated Projects: - Make a collage on chart paper or in scrap book comparing the festivals and climate of Rajasthan and Nagaland.

4. Learn chapter 1 of History, geography and civics.(compulsory for all)



1. Conjuguez cinq – 'er' et 'ir' verbes et faites une phrase avec chaque verbe.  
(Conjugate five - 'er' and 'ir' verbs and make one sentence with each verb.)

2. Écrivez un paragraphe sur mon meilleur ami(e).

3. Draw any one France monument on an A4 sheet paper.

**\*\*Note :**

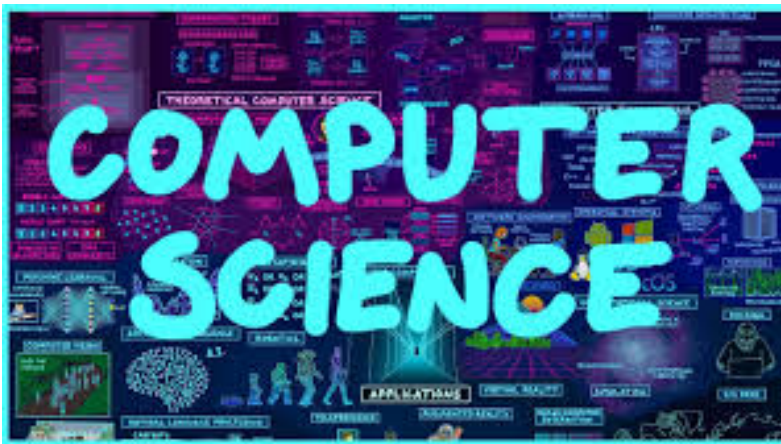
- Write in French note book.



1 सरस्वती माता का चित्र बनाकर एक सरस्वती वंदना का श्लोक लिखिए।

2 पाँच पक्षियों के नाम संस्कृत में चित्र सहित लिखिए।

3 नागालैंड एवं राजस्थान के नृत्य , संस्कृति, एवं त्यौहार चित्र के माध्यम से एक प्रोजेक्ट फाइल तैयार करे ।



Q1. Create a chart on different Number Systems.

Q2. Do in notebook

➤ Convert Binary Number into Decimal Number:

1.  $(1001)_2$
2.  $(10101)_2$
3.  $(1111)_2$
4.  $(10110)_2$

➤ Convert Decimal Number into Octal Number:

1.  $(45)_{10}$
2.  $(177)_{10}$
3.  $(675)_{10}$
4.  $(753)_{10}$

